

ARRIVAL AND DISMISSAL PROCEDURES

RTMS doors open for students at 8:20am

- 6th grade reports to commons
- 7th grade reports to Practice Gym
- 8th grade reports to Competition Gym
- Breakfast is available from 8:20-8:50
- Bell rings to begin class at 8:55

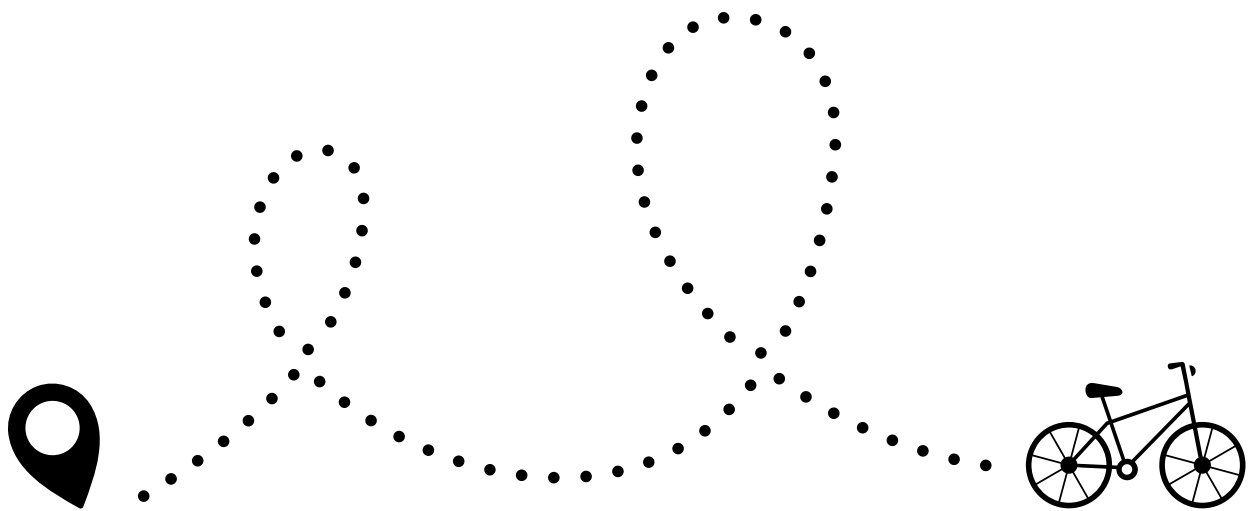
We suggest arriving by 8:45 at the latest to ensure students have plenty of time to make it to first period on time

Please communicate with your student's 7th period teacher about your thundercat's dismissal transportation.

WALKERS/ BIKERS

Walkers and Bikers meet the crossing guard at the crosswalk in front of the RTMS marquee.

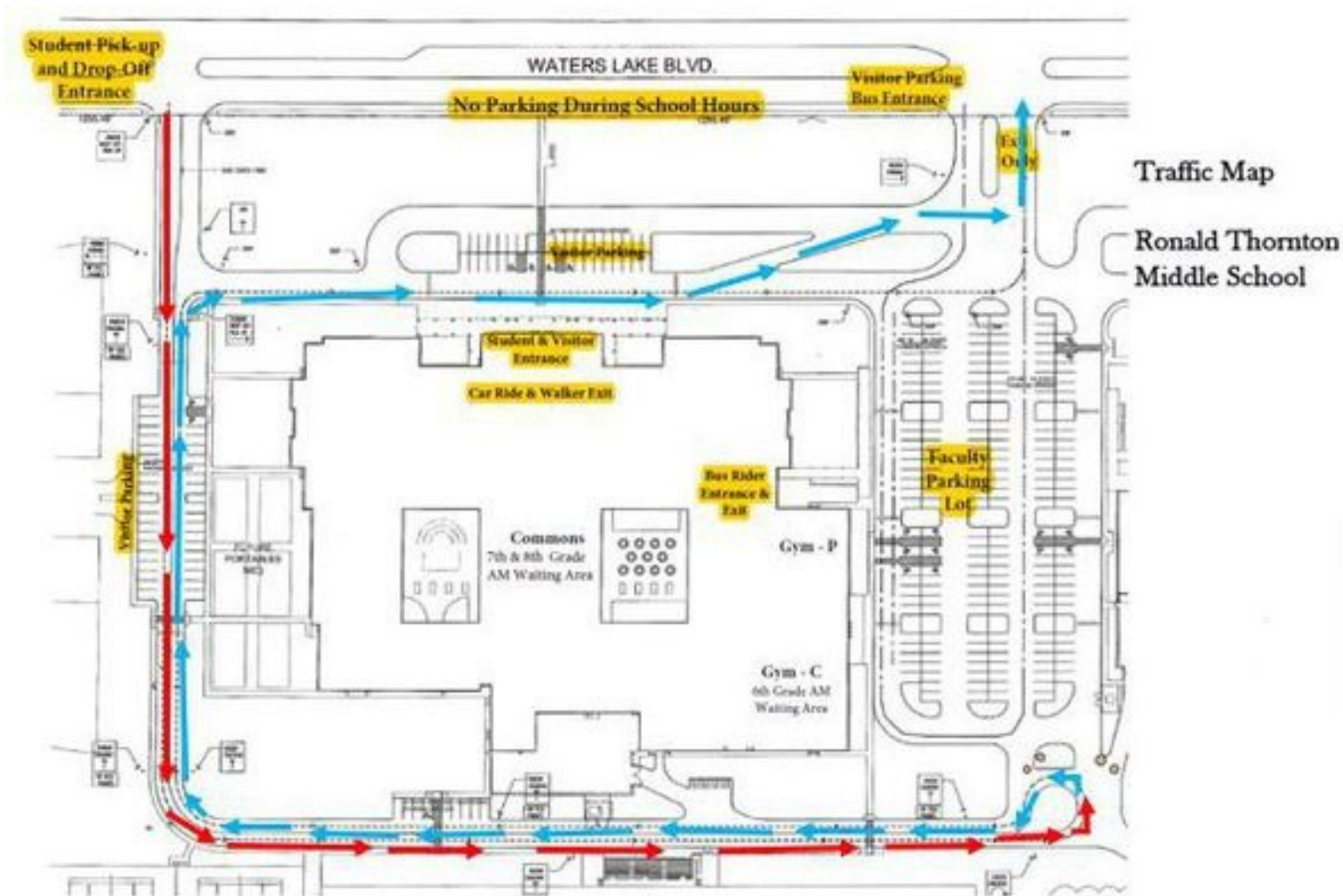
Bikers, walk your bike once you get on campus, and secure your bike in a bike rack.



CAR RIDERS

For their safety, car riders **MUST** be dropped off and picked up at the front of the building.

Be sure not to block the crosswalk and follow the traffic flow map.



BUS RIDERS

Only busses should use the bus ramp (side of the building that faces Leonetti).

Use the FBISD Bus Route Locator to know your Bus Route Number.

<https://www.fortbendisd.com/businfo>

